



The Timken Company
 4500 Mt Pleasant St. NW
 N. Canton, OH 44720
Phone: (234) 262-3000

E-Mail: CustomerCAD@timken.com • **Web site:** www.timken.com

Bearing Unit - Adapter Sleeve UK216 - HE2316, UK Adapter Sleeve Wide Inner Ring Ball Bearings

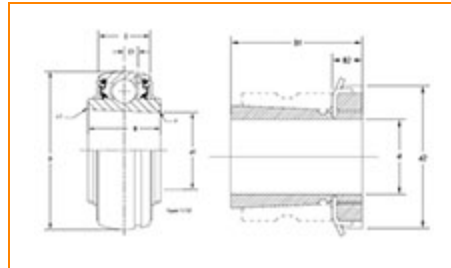
RELATED PRODUCTS

RELATED PRODUCTS

RELATED PRODUCTS

RELATED PRODUCTS

RELATED PRODUCTS



[Specifications](#) | [Dimensions](#) | [Basic Load Ratings](#)

Specifications

Item #	UK216 - HE2316
Bore Type	Tapered bore
Shaft Size d	2.75 in
Adapter Sleeve Number ¹	HE2316
Material	Bearing Steel

Weight	5.6 lb 2.6 Kg
Locking Style	Adapter Sleeve Locking

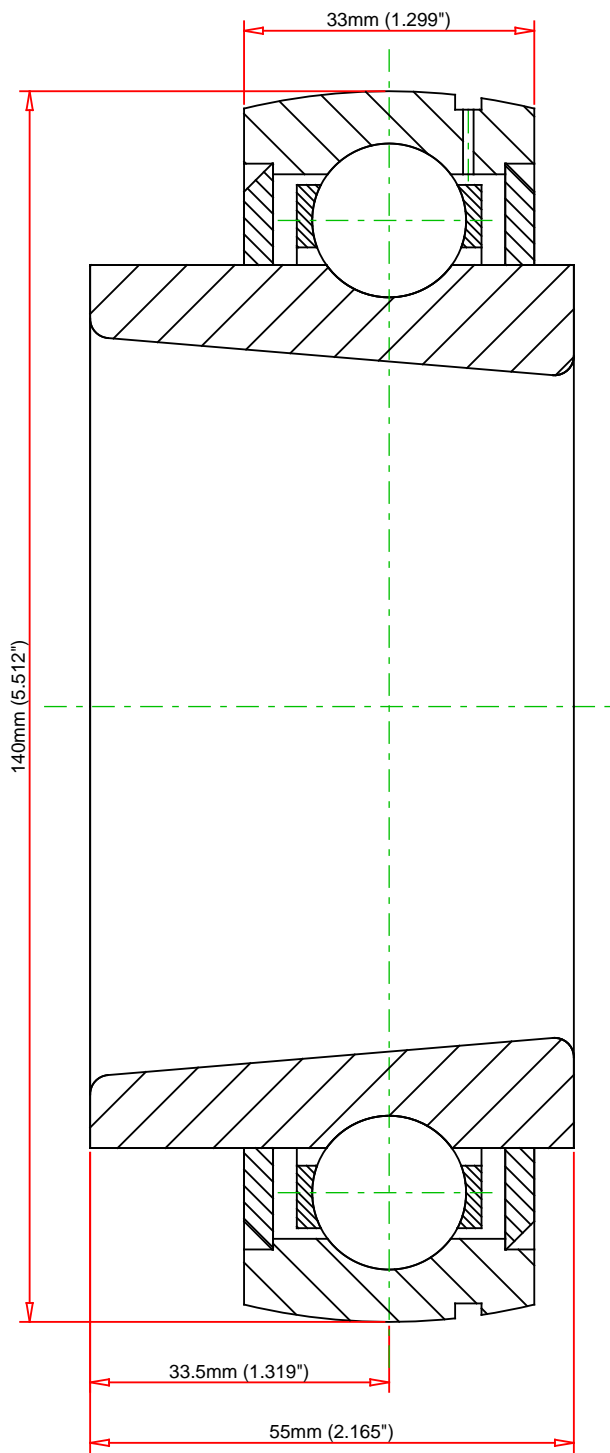
Dimensions

Outside Diameter D	140.000 mm 5.512 in
Outside Ring Width C	33.000 mm 1.299 in
Groove Position C1	9.00 mm 0.354 in
Dimension B1	3.071 in 78.00 mm

Basic Load Ratings

Static Load Rating	11915 lbf 53000 N
Dynamic Load Rating	16344 lbf 72700 N

¹ Purchase the Adapter Sleeve separately



Weight		5.6 lb	2.6 kg	<div>TIMKEN®</div> <div>THE TIMKEN COMPANY NORTH CANTON, OHIO USA</div>		UK216 - HE2316		
						UK Adapter Sleeve Wide Inner Ring Ball Bearings		
				Basic Load Ratings - C _r		16344 lbf	72700 N	
				Load Ratings - C _{0r}		11915 lbf	53000 N	
				Every reasonable effort has been made to ensure the accuracy of the information contained in this writing, but no liability is accepted for errors, omissions or for any other reason.				FOR DISCUSSION ONLY