



**The Timken Company**

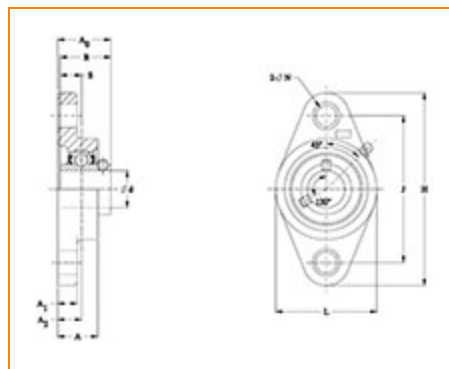
4500 Mt Pleasant St. NW

N. Canton, OH 44720

**Phone:** (234) 262-3000

**E-Mail:** [CustomerCAD@timken.com](mailto:CustomerCAD@timken.com) • **Web site:** [www.timken.com](http://www.timken.com)

## Timken Part Number SUCPLFL210-31/F, Corrosion Resistant Two-Bolt Flanged Housed Units - Set Screw Locking



[Specifications](#) | [Dimensions](#) | [Basic Load Ratings](#)

### Specifications

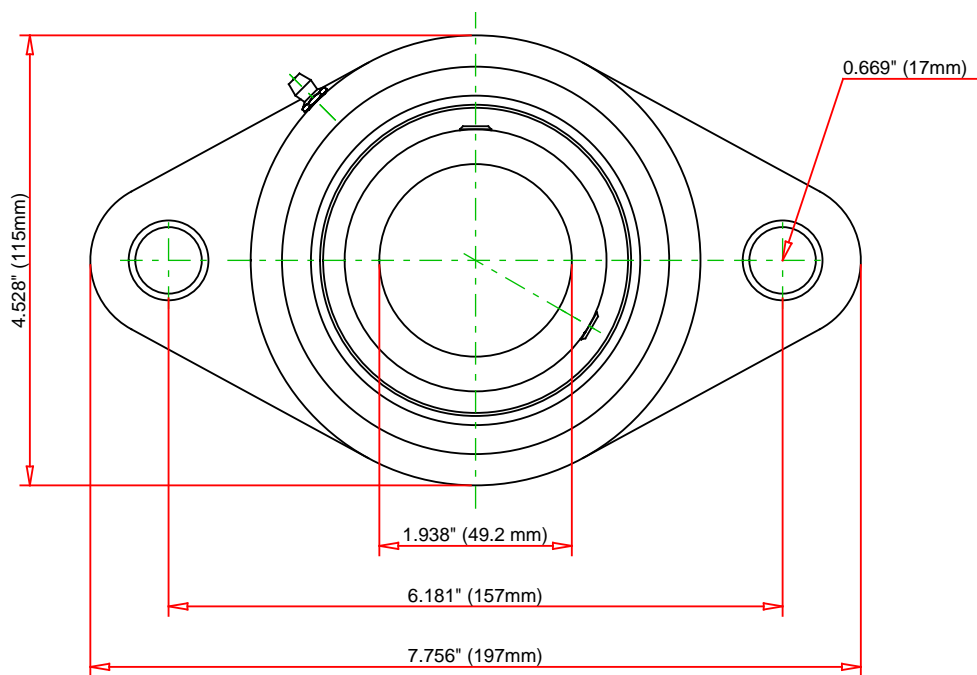
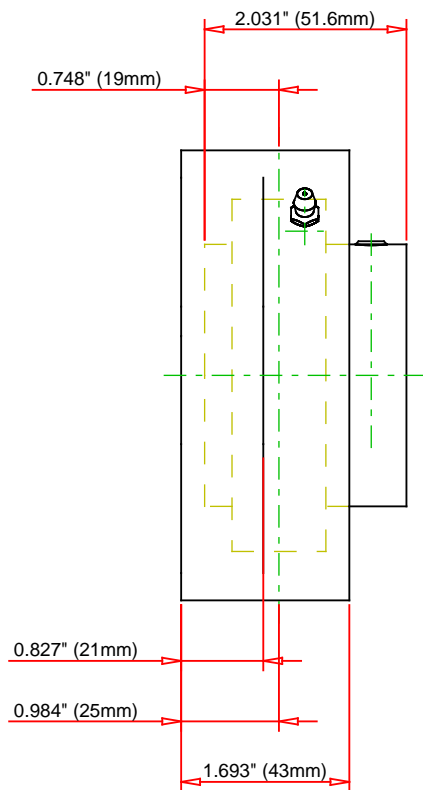
<b>Housing Material</b>	Cast Thermoplastic (Polymer)
<b>Bearing Number</b>	SUC210-31/F
<b>Lubrication Type</b>	Standard Food Safe Grease
<b>Bore Size</b>	1 15/16 in
<b>Weight</b>	2.2 Kg 4.9 lb
<b>Locking Style</b>	Set Screw Locking
<b>Housing Construction</b>	Two-Bolt Flange

### Dimensions

<b>Total Length H</b>	7.756 in 197 mm
<b>Total Height L</b>	4.528 in 115 mm
<b>Bolt Hole Spacing J</b>	6.181 in 157 mm
<b>Housing Width A</b>	1.693 in 43 mm
<b>Bolt Hole Size N</b>	0.669 in 17 mm
<b>Center of Bearing from Housing End A2</b>	0.984 in 25 mm
<b>Center of Bearing from Bearing End S</b>	0.748 in 19 mm
<b>Inner Ring Width B</b>	2.031 in 51.60 mm
<b>Bearing_Center of Bearing from End S</b>	0.748 in 19 mm
<b>Dimension A2</b>	0.984 in 25.00 mm

## Basic Load Ratings

<b>Static Load Rating</b>	4182 lbf 18600 N
<b>Dynamic Load Rating</b>	6700 lbf 29800 N



Bearing Number	SUC210-31/F			
Load Ratings - C <sub>r</sub>	6700	lbf	29800	N
Load Ratings - C <sub>0r</sub>	4182	lbf	18600	N
Weight	4.9	lb	2.2	kg
Housing Material	Cast Thermoplastic (Polymer)			

**TIMKEN**

THE TIMKEN COMPANY  
NORTH CANTON, OHIO USA

**SUCPLFL210-31/F**  
Corrosion Resistant Two-Bolt Flanged  
Housed Units - Set Screw Locking

Every reasonable effort has been made to ensure the accuracy of the information contained in this writing, but no liability is accepted for errors, omissions or for any other reason.

**FOR DISCUSSION ONLY**