

Double joints: EGZM



- Maintenance-free dry operation
- Mechanical joining link between two components
- Compensation of misalignment errors
- Corrosion-resistant
- Double joint turned 90° available upon request



Material:

Housing: **igumid® G** ▶ Page 1190

Spherical ball: **iglidur® W300** ▶ Page 175

Technical data [mm]

Part No.	Max. static load (short-term)		Max. static load (long-term)		Max. pivot angle	Weight [g]
	Tensile force	Compressive force	Tensile force	Compressive force		
	[N]	[N]	[N]	[N]		
EGZM-04-25	1,100	1,300	550	650	32°	3.5
EGZM-04-50	1,100	750	550	375	32°	4.8
EGZM-04-75	1,100	500	550	250	32°	6.1
EGZM-05-25	1,100	1,300	550	650	37°	2.2
EGZM-05-50	1,100	750	550	375	37°	4.9
EGZM-05-75	1,100	500	550	250	37°	6.3
EGZM-06-25	1,100	1,300	550	650	30°	3.4
EGZM-06-50	1,100	750	550	375	30°	4.8
EGZM-06-75	1,100	500	550	250	30°	6.0
EGZM-08-60	3,000	3,500	1,500	1,750	20°	15.2
EGZM-08-100	3,000	1,900	1,500	950	20°	19.5
EGZM-08-150	3,000	900	1,500	450	20°	24.5
EGZM-10-60	2,500	3,500	1,250	1,750	25°	15.3
EGZM-10-85	2,500	2,300	1,250	1,150	25°	18.1
EGZM-10-100	2,500	1,900	1,250	950	25°	19.4
EGZM-10-150	2,000	900	1,000	450	25°	23.7
EGZM-12-60	2,000	3,500	1,000	1,750	25°	14.7
EGZM-12-100	2,500	1,900	1,000	950	25°	18.8
EGZM-12-150	2,500	900	1,250	450	25°	23.3

Alternative spherical ball materials ▶ Page 993



REM:
Low-cost



JEM:
low moisture
absorption

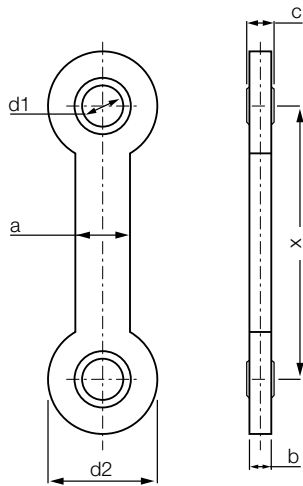


J4EM:
low-cost and
low moisture
absorption



J4VEM:
clearance-free
pre-loaded
spherical ball

Double joints: EGZM



Order key

Type

Size

EGZM-04-25

E series

Double joints

Metric

Inner Ø d1 [mm]

Pitch X [mm]

Spherical ball material

Blank : iglidur® W300

R : iglidur® R

J : iglidur® J

J4 : iglidur® J4

J4V : iglidur® J4V

Dimensions [mm]

d1 E10	d2	X	b	a	c
4	20	25	4	10	5
4	20	50	4	10	5
4	20	75	4	10	5
5	20	25	4	10	6
5	20	50	4	10	6
5	20	75	4	10	6
6	20	25	4	10	6
6	20	50	4	10	6
6	20	75	4	10	6
8	30	60	7	15	8
8	30	100	7	15	8
8	30	150	7	15	8
10	30	60	7	15	9
10	30	85	7	15	9
10	30	100	7	15	9
10	30	150	7	15	9
12	30	60	7	15	10
12	30	100	7	15	10
12	30	150	7	15	10