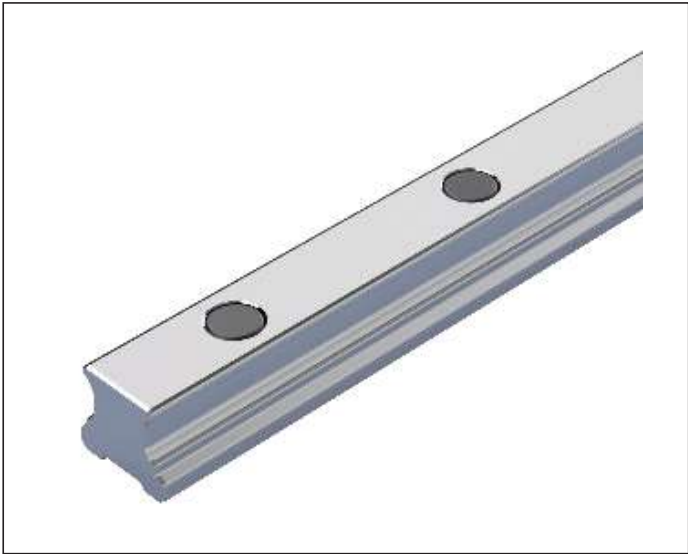


# SNS – with plastic caps – R2055



**Ball guide rails KSE-...-SNS**  
**For bolting from above with plastic caps**

- Notes**
- Observe the instructions for mounting!  
Please request the "Mounting instructions for ball rail systems".
  - To avoid damage to the runner block, the fastening bores of the guide rails must be sealed with plastic caps.
  - Plastic caps included in scope of supply.

**Options and material numbers**

Size	Ball guide rail with size	Accuracy class			Number of partial sections ,, Rail length L (mm), ...		Spacing T (mm)	Recommended rail length in accordance with formula $L = n_B \cdot T - 4 \text{ mm}$
		N	H	P	One-piece	Composite		Maximum number of holes $n_B$
15	R2055 10	4	3	2	31, ...	3., ...	60	64
20	R2055 80	4	3	2	31, ...	3., ...	60	64
25	R2055 20	4	3	2	31, ...	3., ...	60	64
30	R2055 70	4	3	2	31, ...	3., ...	80	48
35	R2055 30	4	3	2	31, ...	3., ...	80	48
45	R2055 40	4	3	2	31, ...	3., ...	105	36